

4) PODATKI

STAROST	12.5	17.5	22.5	30	40	50	60	70	80
ZAPOSLOITEV	4	46	160	266	289	236	74	40	10

OCENI ZA PARAMETRA LINEARNE REGRESIJE

$$\hat{b} = \frac{S_{xy}}{S_x^2}$$

$$\bar{x} = 42.5$$

$$\bar{y} = 125$$

$$\hat{a} = \bar{y} - \frac{S_{xy}}{S_x^2} \bar{x}$$

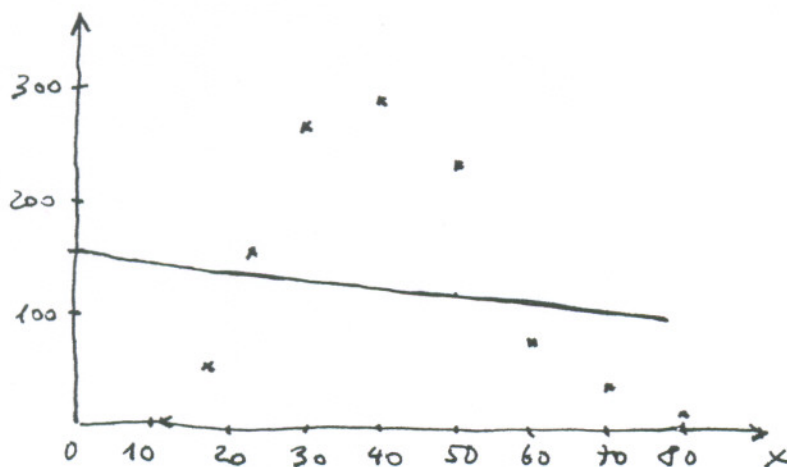
$$S_x^2 = 512.5$$

$$S_{xy} = -441.94$$

$$\hat{b} = -0.862$$

$$\hat{a} = 161.65$$

$$Y = 161.65 - 0.862 X$$



$$x=0 \quad \hat{y} = 161.65$$

$$x=50 \quad \hat{y} = 118.53$$

APROKSIMACIJA JE OČITNO SLABA, SAJ ZVEZA MED X IN Y OČITNO NI LINEARNA. REŠITEV BI BILA V NELINEARNI REGRESIJI (NA PRIMER KVADRATNA, KUBIČNA...)