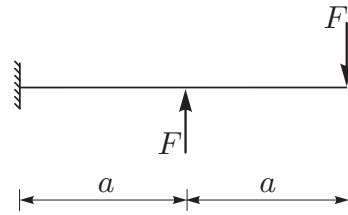
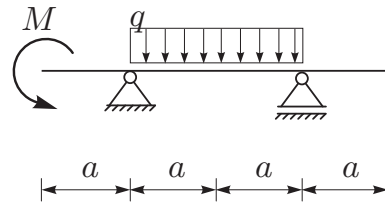


1. Za previsni nosilec na sliki določite diagrame notranjih sil!

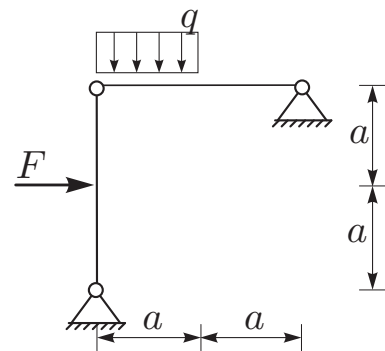


2. Za prostoležeči nosilec s previsom določite diagrame notranjih sil!

Podatki: $a = 2 \text{ m}$, $q = 5 \text{ kN/m}$,
 $M = 10 \text{ kNm}$.

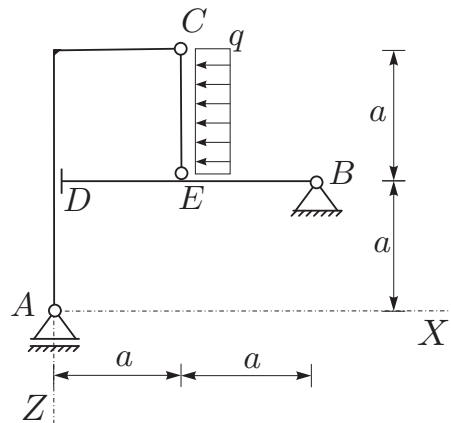


3. Za konstrukcijo na sliki izračunajte stopnjo statične nedoločenosti, reakcije in notranje statične količine (N_x , N_z , M_y)! Rezultate notranjih statičnih količin prikažite z diagrami!
 Podatki: $q = F/a$.



4. Za konstrukcijo na sliki izračunajte reakcije in sile v vezeh!

Podatki: $a = 2 \text{ m}$, $q = 5 \text{ kN/m}$.



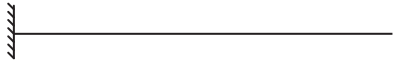
Vpisna številka: 261_____

naloga	točk
1	
2	
3	
4	

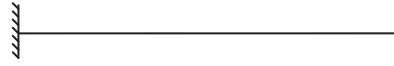
Ime in priimek:

1. – 3. naloga

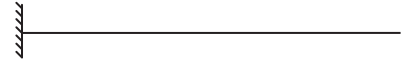
$[N_x]$



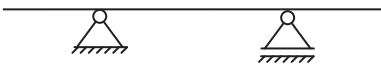
$[N_z]$



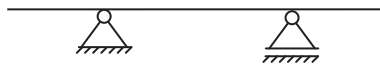
$[M_y]$



$[N_x]$



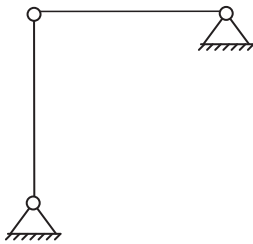
$[N_z]$



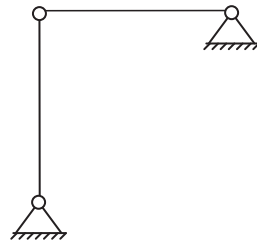
$[M_y]$



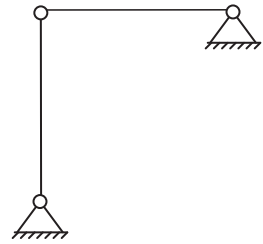
$[N_x]$



$[N_z]$



$[M_y]$



4. naloga

A :

C :

E :

B :

D :

.....